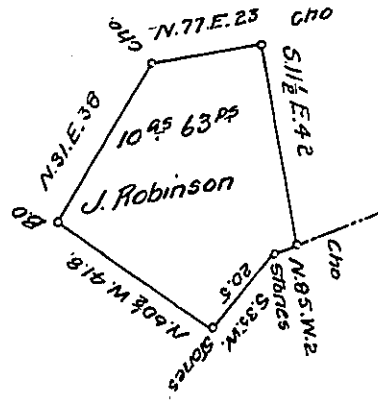


Mary Ash



Amos Ash now
Mary Ash

Wm Wigfield now
Isaac Wigfield

Situate on the South East Side of Martin Mountain in Southampton Town-
 ship Bedford County Containing 10 acres ~~and~~ 63 perches, And the usual
 Allowance of Six per Cent for Roads Surveyed the 1st day of May A.D. 1867.
 In pursuance of a Warrant granted to John Robinson dated the 4th Dec.
 1866. for 20²⁵

Sam^l Ketterman

D.S.

To J. M. Campbell Esq^r

Approved of the 12th Dec. 1867

P. Donahoe C.S.

IN TESTIMONY that the above is a copy of the original remaining on file in
 the Department of Internal Affairs of Pennsylvania, made
 conformably to an Act of Assembly approved the 16th day of
 February, 1833, I have hereunto set my Hand and caused
 the Seal of said Department to be affixed at Harrisburg,
 this twenty-fifth day of September 1907

Henry Houch
 Secretary of Internal Affairs.